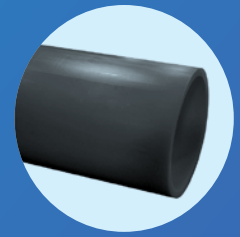


Product data sheet

GPS PE Black pipe (PE80)

For transporting non-potable water, industrial or general/
waste applications.




Range / pressure rating

Diameter size (mm)	SDR	Pressure rating	Material
20mm	9	16 bar	PE80
25 - 63mm	11	12.5 bar	PE80

Other pressure ratings / SDRs may be produced on request.

Colours

Material	Colour
PE80	Black 

Standards / approvals

BS EN 12201-2
(BSI Kitemark Certificate
KM 508224)

**The Water
Supply Regulation**
31/27/30

Lengths

Pipes $\leq 180\text{mm}$ in diameter are available in coil lengths of 50, 75, 100, 150m, or lengths of 6 or 12m.

Markings

Products are marked on one side with characters at least 3mm high.

The following identification and traceability marks are printed once every metre;

- | | |
|--|---|
| • Manufacturers identification: GPS | • Outside diameter: 250mm (example) |
| • Material designation: PE80 (see note 1) | • Manufacturing code: (Contains date) (see note 3) |
| • Standard number: BS EN 12201-2 (see note 2) | • Application: Water |
| • SDR value: SDR 11 (example) | • Pressure rating: eg. 16 bar |

Identification Marking

Note 1: The material code is specified in Works instruction and maybe suffixed as follows: R = 100% rework material.

Note 2: The use of this mark is Aliaxis' claim that the product has been manufactured in accordance with BS EN 12201-2.

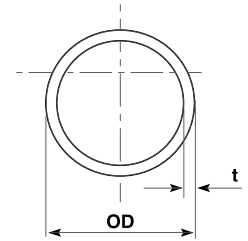
Note 3: The shift code denotes the extruder, shift week and year of manufacture plus the plant identification code. Each item being allocated a maximum of 2 digits. Where the codes numerical value is less than 10 a 0 is inserted. Or a simple date code may be used DD/MM/YY.

Batch number format

8 Digit Code	Extruder Number	Shift Number	Week Number	Year
		1 & 2	3 & 4	5 & 6
	01-23	01 - 14	01 - 52	01-99

Pipe dimensions – water applications (BS EN 12201-2)

SDR 11					
Nom. Size (mm) DN / OD	Max OD (mm)	Min t (mm)	Max t (mm)	Mean Weight (kg/m)	Mean Bore (mm)
20*	20.3	2.3	2.7	0.1	15.2
25	25.3	2.3	2.7	0.2	20.2
32	32.3	3.0	3.4	0.3	25.8
40	40.4	3.7	4.2	0.4	32.3
50	50.4	4.6	5.2	0.7	40.4
63	63.4	5.8	6.5	1.0	50.9



* SDR 9 only. Wall thickness increased to give a lower SDR and more resistance to damage.
GPS pipes, manufactured to BS EN 12201-2 standard, are capable of withstanding transient surge pressures of up to twice the rated pressure of the pipe.